



An Education & Career Guidance Platform



PREPARED FOR

STUDENT TEST NAME
(STREAM : ANY)
(GRADE 11TH AND 12TH)

INTRODUCTION

Hi **STUDENT TEST NAME,**

We are as excited as you to see your fitment results.

We base our results on the assessment of the following traits -

- 1 INTEREST** Based on the popular and widely used Holland theory which assesses individuals and careers from among six types; the recommendations are based on a Person to Environment fit.
- 2 ABILITIES** Focuses on self assessment of a wide array of cognitive, psychomotor and physical abilities which helps an individual accomplish a wide range of career tasks effectively.
- 3 WORKSTYLE/PERSONALITY** Based on personality traits that are critical for work and are identified in various personality tests like Five Factor Model/Big 5, Hogan, CPI etc.
- 4 KNOWLEDGE** Are organized set of principles and are gained through education and experience. Knowing your desired levels helps to compare with requirements in different roles/occupations.

Your career recommendations presented further are determined based on the above assessed traits and mapped to clusters and pathways which are described below -

CLUSTER: Career Clusters contains jobs requiring similar skills. In total there are 16 clusters and your top matches from them are presented.

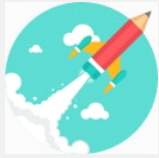
PATHWAY: Different Career Clusters are further categorized into pathways and your top recommendations also include fitment in these pathways.



SUMMARY OF RESULTS

Given below a summary of your Recommended career clusters and a summary of your assessment results.

TOP RECOMMENDED CLUSTERS



EDUCATION AND TRAINING

1. Teaching/Training
2. Professional Support Services



SCIENCE, TECHNOLOGY, ENGINEERING AND MATHEMATICS

1. Science and Math



HUMAN SERVICES

1. Counseling and Mental Health Services
2. Early Childhood Development and Services

POPULAR UG/PG COURSES



EDUCATION



HUMANITIES & SOCIAL SCIENCE



BBA/MBA

* : UG/PG Courses suggested based on your top recommended cluster.

To know more about recommended clusters, pathways and linked education options visit: <https://www.tucareers.com/clusters>

ASSESSMENT RESULTS

INTEREST

- Investigative
- Artistic
- Social

KNOWLEDGE

- Engineering and Technology
- Manufacturing and Production
- Communications

ABILITIES

- Attentiveness
- Psychomotor Abilities
- Perceptual Abilities

WORKSTYLE/PERSONALITY

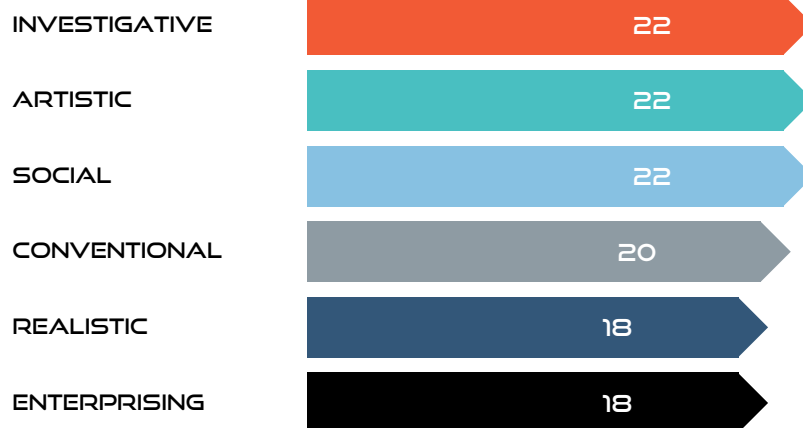
- Practical Intelligence
- Adjustment
- Interpersonal Orientation

For any further guidance and clarifications contact us

+917806912610 | buildingblocx.info@gmail.com

INTEREST ASSESSMENT RESULTS

The assessment of interests is based on Holland's theory. The theory states that people and the careers can be classified into a combination of six interest types and a good match leads to satisfaction, persistence and success. The types identified are Realistic, Investigative, Artistic, Social, Enterprising and Conventional and the results from your assessment are mentioned below



TOP 3 INTEREST AREAS

01

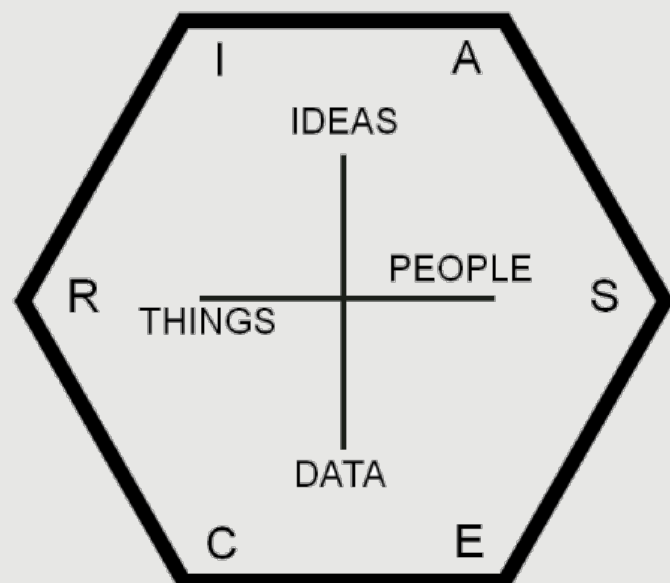
INVESTIGATIVE

02







ARTISTIC

03

SOCIAL

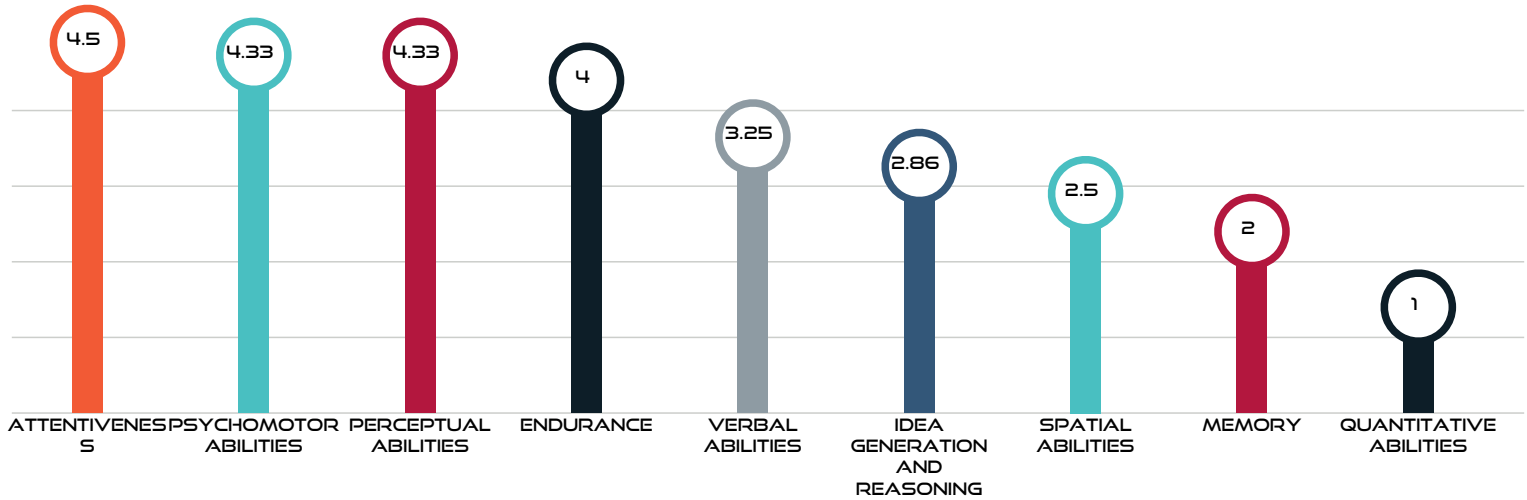


Given below the characteristic and typical interests and abilities for the six interest types -

INTEREST TYPE	INTEREST & ABILITIES	TYPICAL TRAITS
 <p>R - REALISTIC</p>	<ul style="list-style-type: none"> • Like outdoor activities, building things and operating machines • Good at jobs requiring mechanical and athletic abilities 	<ul style="list-style-type: none"> • Practical, frank, focused, persistent and action oriented • Asocial, traditional, uninvolved and inflexible.
 <p>I - INVESTIGATIVE</p>	<ul style="list-style-type: none"> • Like to watch, learn, analyze, design and solve problems. • Good at math, science, research and data analysis jobs. 	<ul style="list-style-type: none"> • Curious, analytical, independent, creators & unconventional • Work alone and thinkers
 <p>A - ARTISTIC</p>	<ul style="list-style-type: none"> • Like to work in unstructured situations and come up creative solutions • Good at language, literature, performing (theater or music) and visual arts 	<ul style="list-style-type: none"> • Imaginative, expressive, innovative, original and sensitive • Disorderly, impulsive and non conforming
 <p>S - SOCIAL</p>	<ul style="list-style-type: none"> • Like to work with people and are interested in helping others • Good public speakers, enjoy training, instructing, counseling or curing others 	<ul style="list-style-type: none"> • Trustworthy, cooperative, religious, outgoing and sensitive • Idealistic
 <p>E - ENTERPRISING</p>	<ul style="list-style-type: none"> • Like to work with other people • Good at influencing, leading, motivating, persuading and performing. 	<ul style="list-style-type: none"> • Ambitious, adventurous, optimistic, social and self confident • Domineering and talkative
 <p>C - CONVENTIONAL</p>	<ul style="list-style-type: none"> • Like to work with data and in structured situations • Good at designing new processes, working with numbers, organizing and following rules and procedures 	<ul style="list-style-type: none"> • Careful, efficient, systematic and diligent • Thrifty

ABILITIES ASSESSMENT RESULTS

Abilities are enduring capabilities to accomplish a wide range of tasks effectively and thus are critical to determine a persons capability match to a career and keep the employer satisfied.



VERBAL ABILITY

Individuals ability to understand the meaning of words and use them effectively in good communication while speaking, listening or writing.

IDEA GENERATION AND REASONING

Individuals ability to come up with original ideas, fluency of ideas, problem recognition, reasoning abilities, information ordering, processing and effective problem solving.

QUANTITATIVE ABILITIES

Individuals ability to use math skills and logical thinking to solve problems in everyday situations. Also indicates ability to gather, sort and make sense of all information related to a problem and then being able to explain ones decision.

MEMORY

Individuals ability to remember information such as words, numbers, pictures, and procedures.

PERCEPTION SPEED

Individuals ability to acquire and organize visual information for objects , pictures and drawing. Also indicates ability to quickly identify patterns and accurately compare similarities and differences among sets of letters, numbers, objects, pictures, or patterns.

SPATIAL ABILITY

Individuals ability to form pictures of objects in ones mind. It also involves easily understanding how drawings represent real objects and correctly imagining how parts fit together.

ATTENTIVENESS

Individuals ability to concentrate on a task over a period of time without being distracted and to be able to shift back and forth between two or more activities or sources of information (such as speech, sounds, touch, or other sources).

MOTOR COORDINATION

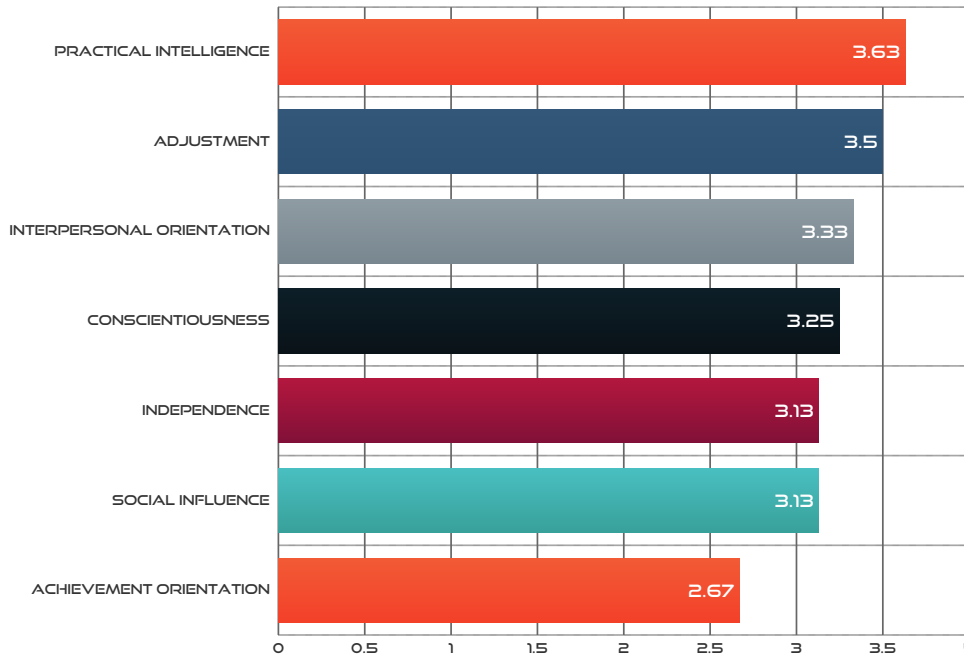
Individuals ability to quickly and accurately coordinate eyes with hands or fingers when making precise hand movements.

ENDURANCE / STAMINA

Individuals ability to exert oneself physically over long periods of time without getting winded or out of breath.

WORK STYLE ASSESSMENT RESULTS

Work Style represents personality, temperament and cognitive factors that influence an individual's work-related aspects and as personality-related research has shown it as a core human value with an application and validity across cultures. The work style measures are built utilizing constructs from multiple personality assessment models like Five Factor Model, Big 5, Hogan etc. Your results on the 7 broad dimensions are presented below.



ACHIEVEMENT ORIENTATION

Indicates the level of personal goal setting, trying to succeed at the goals set, and striving to be competent in one's work and other endeavors.

SOCIAL INFLUENCE

Indicates the level of an individual's impact on others and level of energy and leadership in their work and other situations.

INTERPERSONAL ORIENTATION

Indicates the level of pleasantness, cooperation, sensitivity and ease to get along with others and a preference for associating and working with others.

ADJUSTMENT

Indicates the level of maturity, poise, flexibility and restraint to cope with pressure, stress, criticism, setbacks in handling personal and work-related problems etc.

CONSCIENTIOUSNESS

Indicates the level of dependability, commitment in doing a job correctly and carefully and being trustworthy, accountable and attentive to details.

INDEPENDENCE

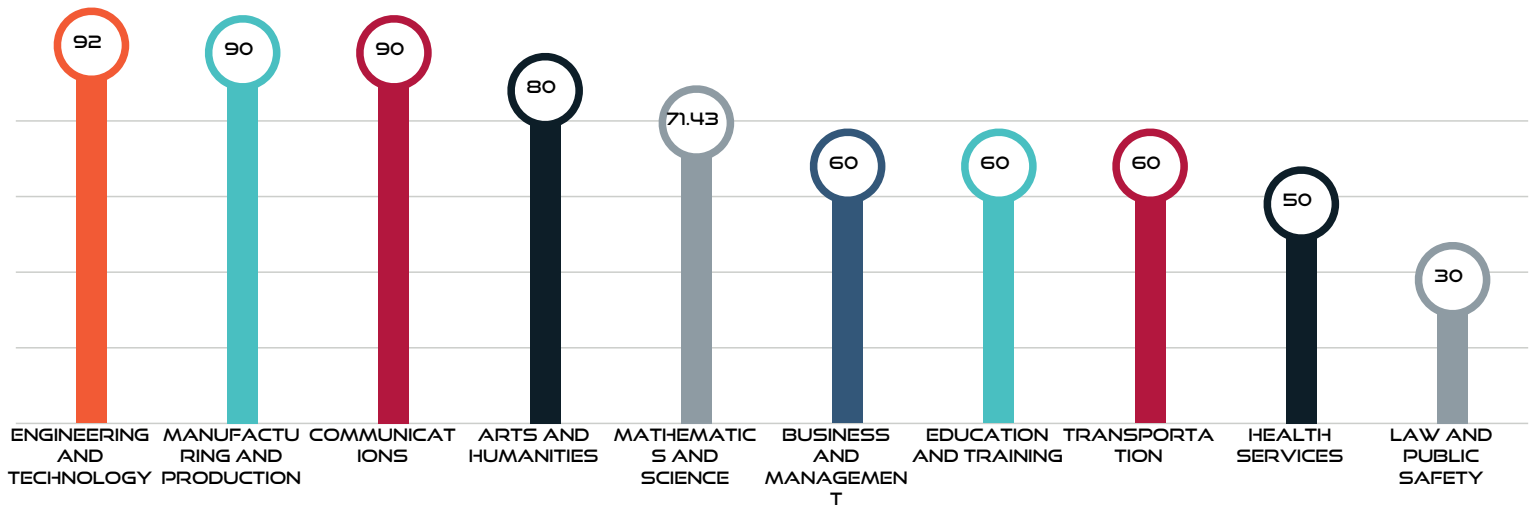
Indicates the level of independence and autonomous working, an own way of doing things, guiding oneself with little or no supervision and depending mainly on oneself to get a job done.

PRACTICAL INTELLIGENCE

Indicates the level of capability to generate new ideas and thinking through things logically.

KNOWLEDGE ASSESSMENT RESULTS

Knowledge are organized set of principles and are gained through education and experience. Your results on the desired levels on the various dimensions are presented below.



BUSINESS AND MANAGEMENT

Knowledge of principles and facts related to business administration and accounting, human and material resource management in organizations, sales and marketing, economics, and office information and organizing systems.

MANUFACTURING AND PRODUCTION

Knowledge of principles and facts related to the production, processing, storage, and distribution of manufactured and agricultural goods.

ENGINEERING AND TECHNOLOGY

Knowledge of the design, development, and application of technology for specific purposes.

MATHEMATICS AND SCIENCE

Knowledge of the history, theories, methods, and applications of the physical, biological, social, mathematical, and geography.

HEALTH SERVICES

Knowledge of principles and facts regarding diagnosing, curing, and preventing disease, and improving and preserving physical and mental health and well-being.

EDUCATION AND TRAINING

Knowledge of principles and methods for curriculum and training design, teaching and instruction for individuals and groups, and the measurement of training effects.

ARTS AND HUMANITIES

Knowledge of facts and principles related to the branches of learning concerned with human thought, language, and the arts.

LAW AND PUBLIC SAFETY

Knowledge of regulations and methods for maintaining people and property free from danger, injury, or damage; the rules of public conduct established and enforced by legislation, and the political process establishing such rules.

COMMUNICATIONS

Knowledge of the science and art of delivering information.

TRANSPORTATION

Knowledge of principles, methods for moving people or goods by air, rail, sea, or road, including relative costs & benefits.

RECOMMENDED CLUSTER # 1

Education and Training

Careers in Education and training cluster involves guiding and training people. The pathways and occupations in this cluster are spread across administrative jobs, support activities, coaching and teaching. The opportunities in this cluster are in schools, undergraduate and post graduate colleges and universities as well as in industry for training professionals. In most countries this cluster provides the largest number of organized full time and part time jobs.



TOP RECOMMENDED PATHWAYS



To know more about these clusters, pathways, occupations and courses visit www.tucareers.com/clusters

POPULAR SUBJECT CHOICES

Languages / Literature, Social Studies, Sociology, Psychology, Philosophy, Mathematics, Science, Political Science, History, Multimedia and Web Technology, Physical Education

EDUCATION CHOICES

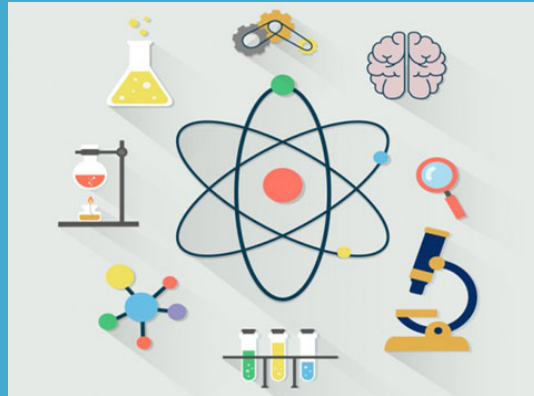
Follow links below to know more about UG/PG courses and colleges-

- [Education](#)
- [Humanities & Social Science](#)
- [BBA/MBA](#)

RECOMMENDED CLUSTER # 2

Science, Technology, Engineering and Mathematics

Careers in the Science, technology, engineering, and mathematics cluster involve working on scientific research and in planning and design products and systems. Pathways and occupations in this cluster involve diverse activities like overseeing the construction of roads and bridges, developing new systems and methods to prevent diseases, designing and conceptualizing new products and services. There are also workers in this cluster that provide support to the activities done by scientists, mathematicians, or engineers.



TOP RECOMMENDED PATHWAYS

Science and Math

52.33%

Engineering and Technology

44.17%

To know more about these clusters, pathways, occupations and courses visit www.tucareers.com/clusters

POPULAR SUBJECT CHOICES

Mathematics, Physics, Chemistry, Biology, Bio Engineering Graphics, Electronics / Computer Networking / Embedded , Technology Educations

EDUCATION CHOICES

Follow links below to know more about UG/PG courses and colleges-

- [Science](#)
- [Engineering](#)
- [BCA/MCA](#)
- [Education](#)

RECOMMENDED CLUSTER # 3

Human Services

Careers in the Human services cluster help individuals and families meet their personal needs. As part of this cluster there are several pathways and occupations and these involve working in government offices, hospital, nonprofit organizations, hotels, or schools. Several individuals working in this cluster are also self-employed. Work in this cluster involve helping students with career and education choices, providing personal care and other services or providing counseling and support.



TOP RECOMMENDED PATHWAYS

Counseling and Mental Health Services

60%

Early Childhood Development and Services

55.67%

Family and Community Services

54.17%

To know more about these clusters, pathways, occupations and courses visit www.tucareers.com/clusters

POPULAR SUBJECT CHOICES

Languages / Literature, Sociology, Psychology, Philosophy, Home Science, Foreign Languages, Social Work , Physical Education

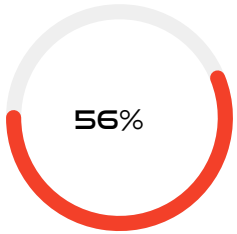
EDUCATION CHOICES

Follow links below to know more about UG/PG courses and colleges-

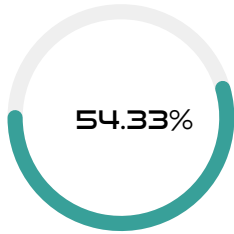
- [Humanities & Social Science](#)
- [Tourism Hotel Management](#)
- [BBA/MBA](#)
- [Fine Arts](#)

OTHER RECOMMENDED PATHWAYS

You can also explore these Clusters:Pathways



Cluster : Health
Science
Pathway : Therapeutic
Services



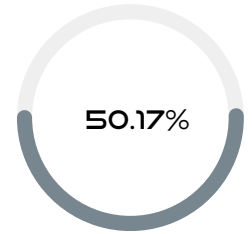
Cluster : Health
Science
Pathway : Health
Informatics



Cluster : Information
Technology
Pathway : Interactive
Media



Cluster : Health
Science
Pathway : Support
Services



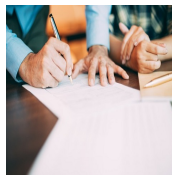
Cluster : Health
Science
Pathway : Diagnostic
Services

RECOMMENDED INDUSTRIES

Explore these links for details of Industries



EDUCATIONAL SERVICES



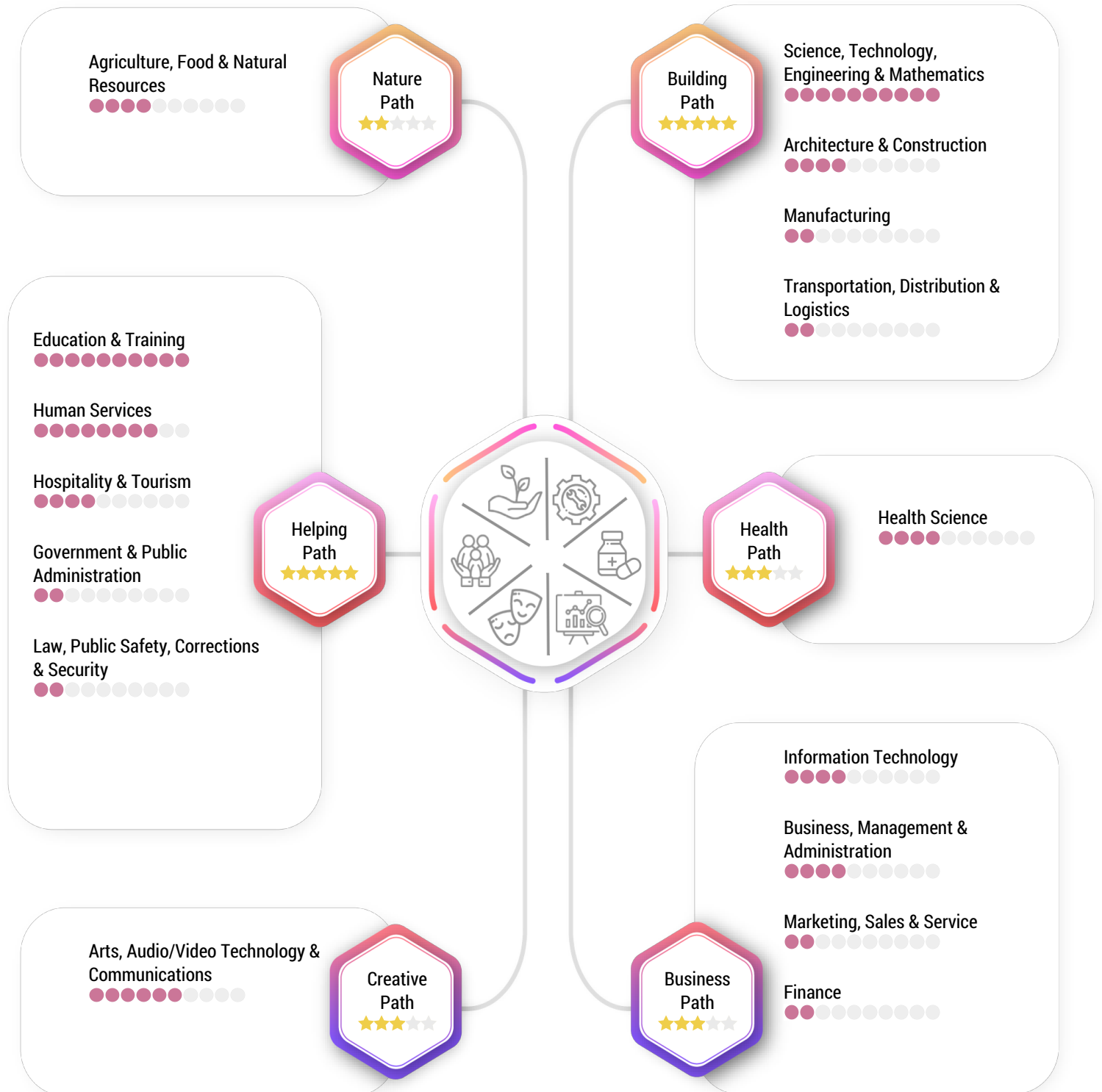
PROFESSIONAL SCIENTIFIC
AND TECHNICAL SERVICES



SELF-EMPLOYED

CAREER PATH RATINGS

The career suggestions made are career paths and clusters which will help you understand your best matches in the world of work.



“Nothing happens until you decide. Make a Decision and watch your life move forward.”

- Oprah



For any Further guidance and clarification contact us

 buildingblocx.info@gmail.com

 +917806912610

 www.buildingblocx.com/

