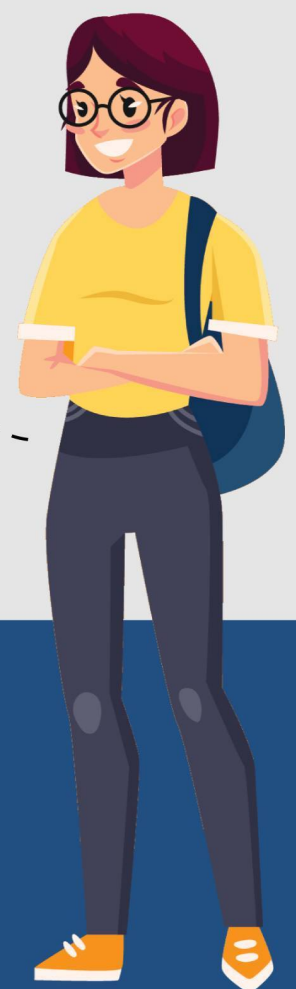
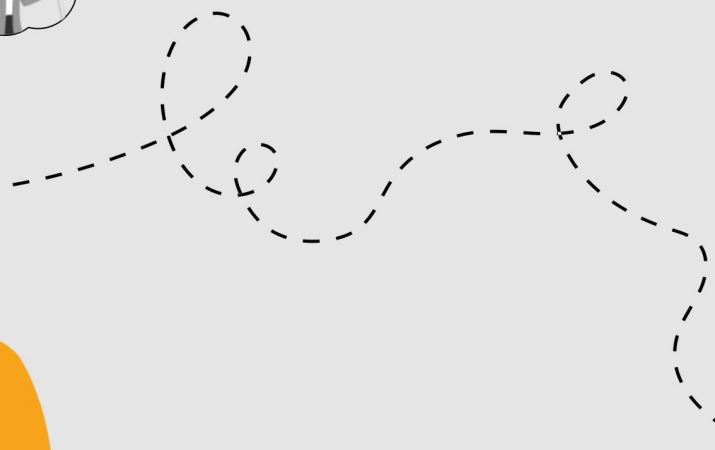




**BUILDING  
BLOCKS**

An Education & Career Guidance Platform



**PREPARED FOR**

**TEST NAME  
(GRADE 8TH - 10TH)**

# INTRODUCTION

Hi **TEST NAME**,

We are as excited as you to see your fitment results.

We base our results on the assessment of the following

- 1 INTEREST** Based on Holland's theory which assesses individual and career requirements on six interest types.
- 2 ABILITIES** Based on self assessment of varied physical and aptitude related factors that helps an individual to accomplish different career tasks effectively.
- 3 PERSONALITY** Based on five personality traits that account for individual differences and can impact how we perform in different careers.

The career suggestions made are career paths and clusters which will help you understand your best matches in the world of work. -

**CAREER PATHS:** 6 different categories of careers to help you explore the world of work in a logical and meaningful way.

**CAREER CLUSTERS** Different career paths are further classified into 16 different career clusters containing occupations requiring similar skills.

Your results on the above assessed factors and career suggestions are presented further in this report.



# SUMMARY OF RESULTS

Given below a summary of your Recommended career clusters, most suited pathways and a summary of your assessment results.

## TOP RECOMMENDED CLUSTERS



### HEALTH PATH

1. Health Science



### BUILDING PATH

1. Science, Technology, Engineering and Mathematics
2. Manufacturing



### NATURE PATH

1. Agriculture, Food and Natural Resources

## RECOMMENDED STREAMS\*



### SCIENCE (BIOLOGY)



### SCIENCE (MATHS & BIOLOGY)



### HUMANITIES

\* : Streams suggested based on your top recommended cluster.

## ASSESSMENT RESULTS (TOP 3)

### INTEREST

- Realistic
- Investigative
- Artistic

### ABILITIES

- Endurance
- Memory
- Perceptual Abilities

### PERSONALITY

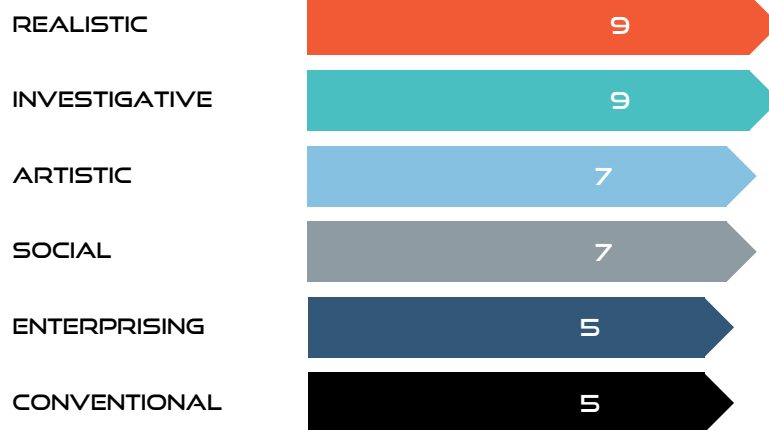
- Extraversion
- Agreeableness
- Conscientiousness

For any further guidance and clarifications contact us

+917806912610 |  
BUILDINGBLOCKX.INFO@GMAIL.COM

# INTEREST ASSESSMENT RESULTS

The assessment of interests is based on Hollands theory. The theory states that people and the environments they operate in (careers) can be classified into a combination of six interest or vocational personality types and a congruence with the environment leads to satisfaction, persistence and success. The six types identified are Realistic, Investigative, Artistic, Social, Enterprising and Conventional and these are also called RIASEC in short and the results from your assessment are mentioned below.



## TOP 3 INTEREST AREAS

01

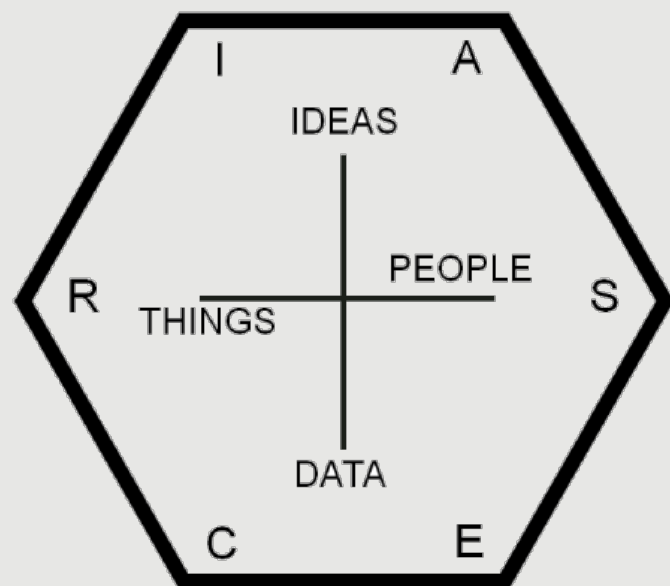
REALISTIC

02







INVESTIGATIVE

03

ARTISTIC

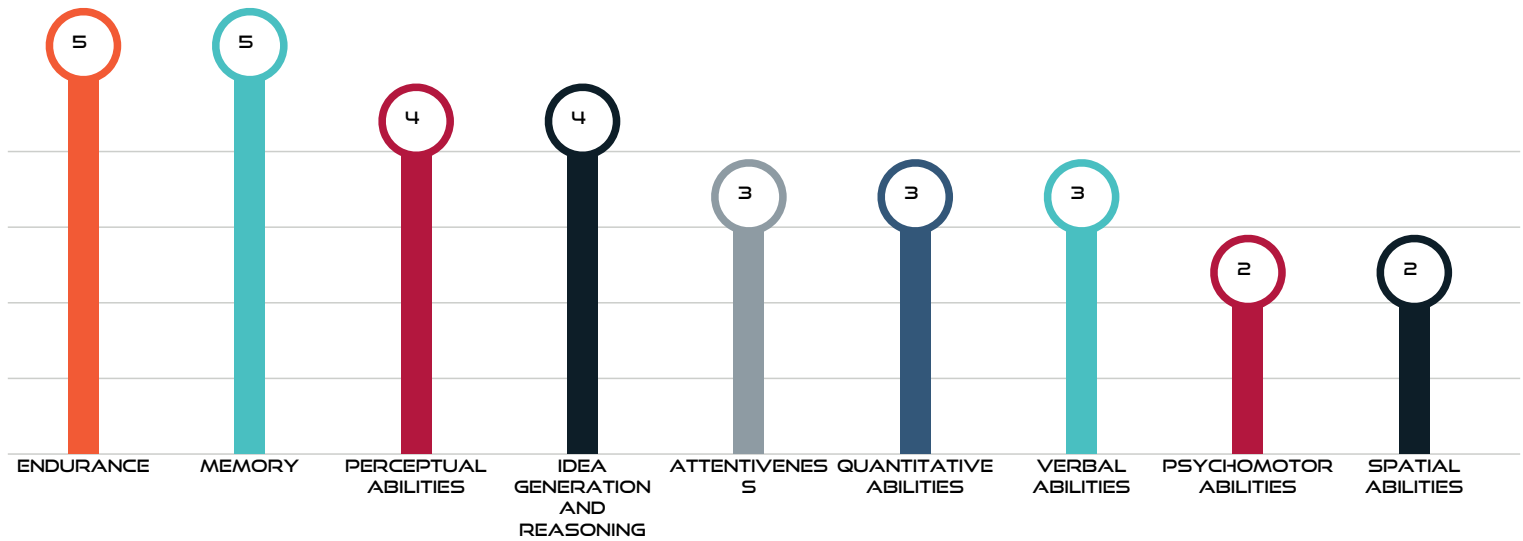


Given below the characteristic and typical interests and abilities for the six interest types -

INTEREST TYPE	INTEREST & ABILITIES	TYPICAL TRAITS
 <p><b>R - REALISTIC</b></p>	<ul style="list-style-type: none"> <li>• Like outdoor activities, building things and operating machines</li> <li>• Good at jobs requiring mechanical and athletic abilities</li> </ul>	<ul style="list-style-type: none"> <li>• Practical, frank, focused, persistent and action oriented</li> <li>• Asocial, traditional, uninvolved and inflexible.</li> </ul>
 <p><b>I - INVESTIGATIVE</b></p>	<ul style="list-style-type: none"> <li>• Like to watch, learn, analyze, design and solve problems.</li> <li>• Good at math, science, research and data analysis jobs.</li> </ul>	<ul style="list-style-type: none"> <li>• Curious, analytical, independent, creators &amp; unconventional</li> <li>• Work alone and thinkers</li> </ul>
 <p><b>A - ARTISTIC</b></p>	<ul style="list-style-type: none"> <li>• Like to work in unstructured situations and come up creative solutions</li> <li>• Good at language, literature, performing (theater or music) and visual arts</li> </ul>	<ul style="list-style-type: none"> <li>• Imaginative, expressive, innovative, original and sensitive</li> <li>• Disorderly, impulsive and non conforming</li> </ul>
 <p><b>S - SOCIAL</b></p>	<ul style="list-style-type: none"> <li>• Like to work with people and are interested in helping others</li> <li>• Good public speakers, enjoy training, instructing, counseling or curing others</li> </ul>	<ul style="list-style-type: none"> <li>• Trustworthy, cooperative, religious, outgoing and sensitive</li> <li>• Idealistic</li> </ul>
 <p><b>E - ENTERPRISING</b></p>	<ul style="list-style-type: none"> <li>• Like to work with other people</li> <li>• Good at influencing, leading, motivating, persuading and performing.</li> </ul>	<ul style="list-style-type: none"> <li>• Ambitious, adventurous, optimistic, social and self confident</li> <li>• Domineering and talkative</li> </ul>
 <p><b>C - CONVENTIONAL</b></p>	<ul style="list-style-type: none"> <li>• Like to work with data and in structured situations</li> <li>• Good at designing new processes, working with numbers, organizing and following rules and procedures</li> </ul>	<ul style="list-style-type: none"> <li>• Careful, efficient, systematic and diligent</li> <li>• Thrifty</li> </ul>

# ABILITIES ASSESSMENT RESULTS

Abilities are our capabilities to accomplish a wide range of tasks effectively. These are critical to match with career requirement so that we can accomplish our tasks effectively.



## VERBAL ABILITY

Ability to understand the meaning of words and use them while speaking and writing.

## IDEA GENERATION AND REASONING

Ability to come up with original ideas, reasoning abilities and effective problem solving.

## QUANTITATIVE ABILITIES

Ability to use math skills and logical thinking to solve problems in everyday situations.

## MEMORY

Ability to remember information such as words, numbers, pictures, and procedures.

## PERCEPTION SPEED

Ability to acquire and organize visual information and quickly compare similarities and differences.

## SPATIAL ABILITY

Ability to form pictures of objects in one's mind and correctly imagining how parts fit together.

## ATTENTIVENESS

Ability to concentrate on a task over a period of time without being distracted

## MOTOR COORDINATION

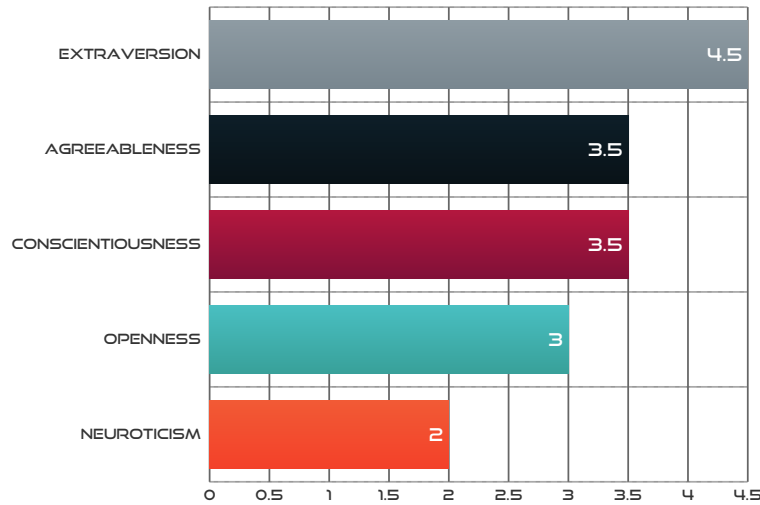
Ability to quickly and accurately coordinate eyes, hands & fingers when making movements.

## ENDURANCE / STAMINA

Ability to exert oneself physically over long periods of time without getting tired.

# BIG 5 PERSONALITY RESULTS

Personality is similar patterns of thoughts, feelings, or actions that distinguish people from one another. Everyone possesses the five traits below but the degrees differ. Scores above the midpoint can be treated as a high score and vice versa. There should not be any good or bad interpretation made, but the below help in understanding ourselves.



## EXTRAVERSION

People with High extraversion are outgoing and like interacting with others. They like being the focus of attention and hence do well in careers like public relations, sales, event planning, law etc. People who are low in extroversion typically prefer careers like software development, graphic designing etc.

## AGREEABLENESS

High agreeableness leads to increased likeability and popularity, hence such people do well in fields like human resources, counselors, customer service etc. Low agreeableness is useful in situations where tough decisions have to be taken. Disagreeable people can thus do well as scientists, critics, or soldiers.

## CONSCIENTIOUSNESS

Conscientious individuals mostly avoid trouble and achieve high levels of success through careful planning and persistence. They are reliable but can be perfectionists, workaholics and sometime may be seen as boring. These individuals will achieve high success as managers, CEOs and fields like military, law etc.

## NEUROTICISM

Neuroticism refers to the tendency to experience negative feelings. People high in neuroticism are emotionally reactive, responding to events that would not affect most people, and their reactions tend to be more intense than normal. Those who score low tend to be calm, emotionally stable, and free from negative feelings and do well in high stress jobs.

## OPENNESS

Openness separates creative people from conventional people. Open people are curious and appreciative of art. People with low scores on this scale tend to prefer the straightforward things and are resistant to change. High openness is required in creative fields. People with lower openness do well in police work, sales, and service occupations.

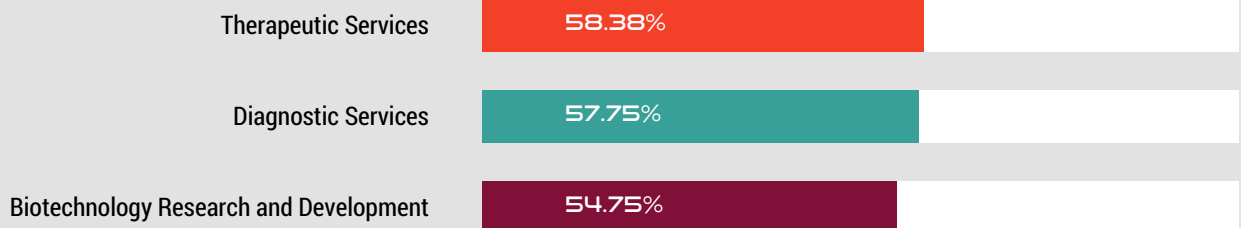
## RECOMMENDED CLUSTER # 1

### Health Science

This cluster involves working to promote health, wellness, diagnosing and treating illness.



### TOP RECOMMENDED PATHWAYS



To know more about these clusters, pathways, occupations and courses visit [www.tucareers.com/clusters](http://www.tucareers.com/clusters)

### POPULAR SUBJECT STREAMS

Science (Biology), Science (Maths & Biology), Humanities

### POPULAR SUBJECT CHOICES

Biology, Biotechnology, Chemistry, Physics, Mathematics, Home Science, Languages / Literature, Physical Education

### EDUCATION CHOICES

Follow links below to know more about UG/PG courses and colleges-

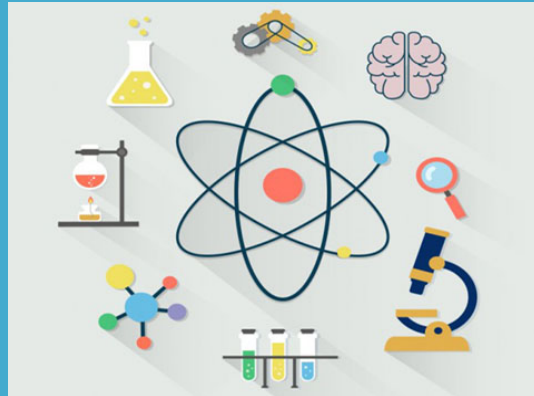
- [Medicine](#)
- [Humanities & Social Science](#)
- [Science](#)
- [BCA/MCA](#)



## RECOMMENDED CLUSTER # 2

### Science, Technology, Engineering and Mathematics

This cluster involves work in scientific research, planning and design products and systems.



## TOP RECOMMENDED PATHWAYS

Science and Math

61.38%

Engineering and Technology

58.88%

To know more about these clusters, pathways, occupations and courses visit [www.tucareers.com/clusters](http://www.tucareers.com/clusters)

## POPULAR SUBJECT STREAMS

Science (Maths), Science (Biology), Science (Maths & Biology)

## POPULAR SUBJECT CHOICES

Mathematics, Physics, Chemistry, Biology, Bio Engineering Graphics, Electronics / Computer Networking / Embedded , Technology Educations

## EDUCATION CHOICES

Follow links below to know more about UG/PG courses and colleges-

- [Science](#)
- [Engineering](#)
- [BCA/MCA](#)
- [Education](#)

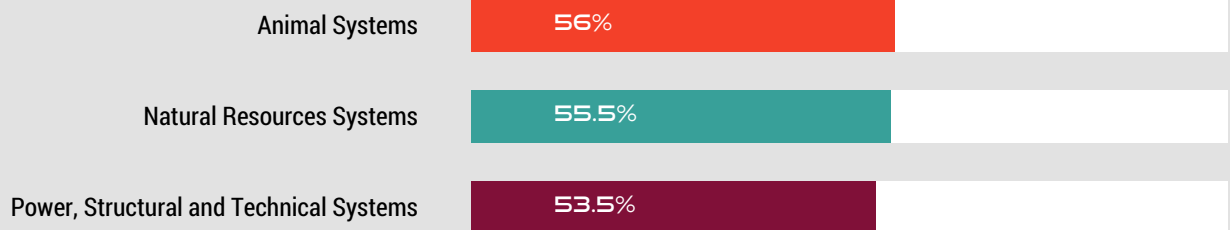
## RECOMMENDED CLUSTER # 3

### Agriculture, Food and Natural Resources

This cluster involves work to produce food, plants, animals, fabrics, wood, and crops.



## TOP RECOMMENDED PATHWAYS



To know more about these clusters, pathways, occupations and courses visit [www.tucareers.com/clusters](http://www.tucareers.com/clusters)

## POPULAR SUBJECT STREAMS

Science (Maths), Science (Biology), Science (Maths & Biology), Humanities

## POPULAR SUBJECT CHOICES

Mathematics, Biology, Biotechnology, Geography, Earth Sciences, Physics, Chemistry, Agriculture

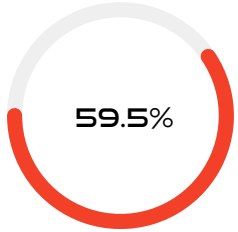
## EDUCATION CHOICES

Follow links below to know more about UG/PG courses and colleges-

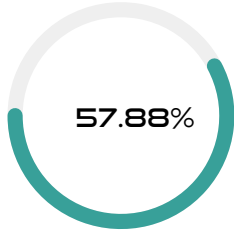
- [Engineering](#)
- [Science](#)
- [Tourism Hotel Management](#)
- [Humanities & Social Science](#)

## OTHER RECOMMENDED PATHWAYS

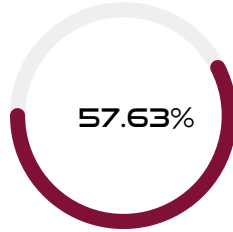
You can also explore these Clusters:Pathways



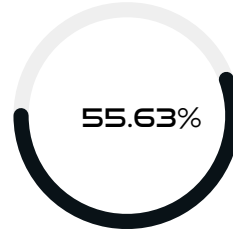
Cluster : Architecture  
and Construction  
Pathway : Design/Pre-  
Construction



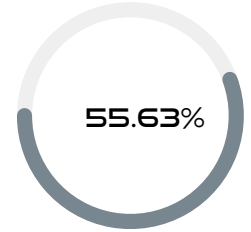
Cluster :  
Transportation,  
Distribution and  
Logistics  
Pathway : Facility and  
Mobile Equipment  
Maintenance



Cluster : Manufacturing  
Pathway :  
Manufacturing  
Production Process  
Development



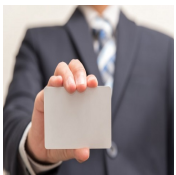
Cluster : Manufacturing  
Pathway :  
Maintenance,  
Installation and Repair



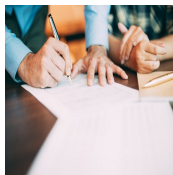
Cluster : Information  
Technology  
Pathway : Interactive  
Media

## RECOMMENDED INDUSTRIES

Explore these links for details of Industries



**SELF-EMPLOYED**



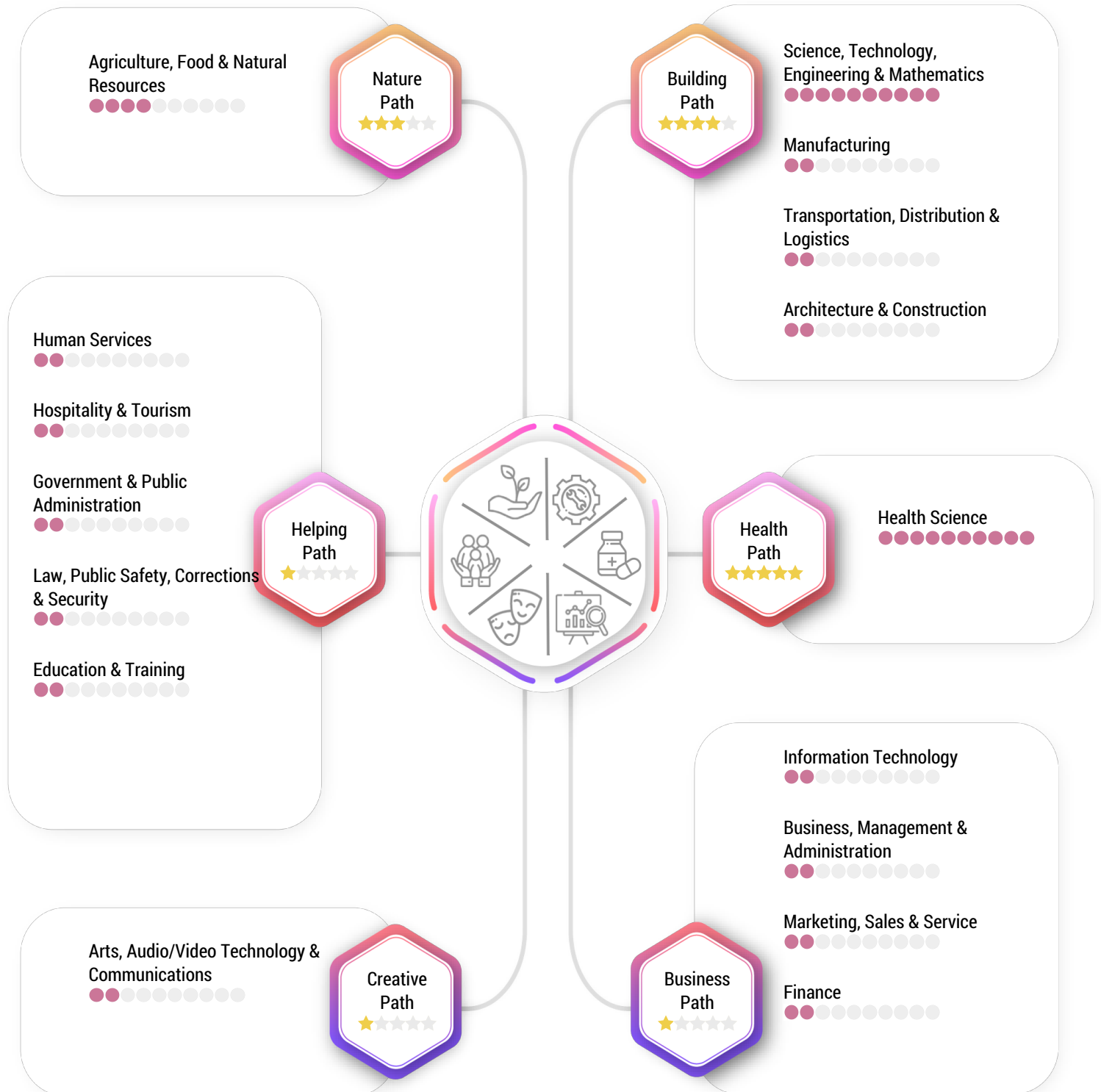
**PROFESSIONAL SCIENTIFIC  
AND TECHNICAL SERVICES**



**HEALTH CARE AND SOCIAL  
ASSISTANCE**

# CAREER PATH RATINGS

The career suggestions made are career paths and clusters which will help you understand your best matches in the world of work.



*“Nothing happens until you decide. Make a Decision and watch your life move forward.”*

*- Oprah*



For any Further guidance and clarification contact us



[buildingblocx.info@gmail.com](mailto:buildingblocx.info@gmail.com)



+917806912610



[www.buildingblocx.com/](http://www.buildingblocx.com/)

